

SCHEDULE 2 SEPARATION DISTANCES

Division 1: Separation Distances – Intensive Animal Industries

1.1 Separation of Intensive Animal Industries from Sensitive Land Uses

- (1) “*Intensive animal industries*” are separated from “*sensitive land uses*” in accordance with the following distances -

Type of “Intensive animal industry”	Animal/ Fowl No.’s	Urban and Small Town “Zone” (metres)	Public Roads (metres)	Other Boundaries of the Land (metres)	“Sensitive land uses” other than in the Urban and Small Town “Zone” (metres)	Watercourses, Well and Bores (metres)
Piggery (Standard Pig Units)	Up to - 1000	2500	200	50	800	100
	1001 – 5000	3500	200	50	1000	200
	5001 – 10000	5000	200	50	1500	200
	>10000	8000	200	50	2000	200
Poultry Farm	Up to -1000	2000	80	40	800	100
	1001 – 10000	4000	120	40	1000	100
	>10000	5000	140	40	2000	100
Lot Feeding (Cattle: Standard Cattle Units)	Up to 500	2000	200	100	700	100
	501 - 5000	6000	200	130	1500	200
	5001 – 10000	7000	200	130	2000	200
	>10000	15000	200	130	2500	200
Sheep/Goats	Up to 500	1000	150	100	800	100
	501-1500	3000	150	100	800	150
	1501 – 10000	4000	200	130	1000	200
	>10000	7000	200	130	2000	200
Other	all	1000	70	40	700	100

1.2 Separation of Sensitive Land Uses from Intensive Animal Industries

- (1) "Sensitive land uses" are separated from "Intensive animal industries" in accordance with the following distances -

Type of "Intensive animal industry"	Animal/Fowl No.'s	Separation Distance (metres)
Piggery (Standard Pig Units)	Up to -1000	800
	1001 – 5000	1000
	5001 – 10000	1500
	>10000	2000
Poultry Farm	Up to -1000	800
	1001 – 10000	1000
	>10000	2000
Lot Feeding (Cattle: Standard Cattle Units)	Up to 500	700
	501- 5000	1500
	5001 – 10000	2000
	>10000	2500
Sheep/Goats	Up to 500	800
	501-1500	800
	1501 – 10000	1000
	>10000	2000
Other	All	700

Division 2: Separation Distances – Extractive Industries

2.1 Separation Distances to Extractive Industries

(1) Separation distances to “*Extractive Industries*” are as follows -

Mining Tenure/Extractive Industry	Resource Property	Separation Distance (metres)
Mining Leases		
SERICS OPALS	Part of Lot 4040 on PH 1018	1000
GOOD ONE MINE	Part of Lot 4040 on PH 1018	1000
STREAMLINE DIP	Part of Lot 4040 on PH 1018	1000
MARK	Part of Lot 4040 on PH 1018	1000
ANN	Part of Lot 4040 on PH 1018	1000
HORSESHOE	Part of Lot 4040 on PH 1018	1000
BOULDER	Part of Lot 4040 on PH 1018	1000
GALAXY	Part of Lot 4040 on PH 1018	1000
WAZZARDS FLASH	Part of Lot 4040 on PH 1018	1000
LUCKY MINE	Part of Lot 4040 on PH 1018	1000
GIBBER	Part of Lot 1 on WBN 17	1000
LUCKY KEN	Part of Lot 1 on BC 21	1000
CHECKMATE 2	Part of Lot 1 on BC 21	1000
THE RED CENTRE	Part of Lot 1 on BC 21	1000
CAT DOCTOR	Part of Lot 1 on BC 21	1000
THREE AMIGOS	Part of Lot 1 on BC 21	1000
ASHY.K	Part of Lot 12 on WBN 51	1000
FLETCH	Part of Lot 12 on WBN 51	1000
MARY ELLEN	Part of Lot 12 on WBN 51	1000
STRIPPER	Part of Lot 12 on WBN 51	1000
GUNNA	Part of Lot 12 on WBN 51	1000
LUCKY VALLEY	Part of Lot 1201 on PH 1309	1000
BIG CLIDE	Part of Lot 1201 on PH 1309	1000

FIRST CHOICE	Part of Lot 1201 on PH 1309	1000
LASLO'S PRIDE	Part of Lot 1201 on PH 1309	1000
BIG DICK	Part of Lot 1201 on PH 1309	1000
CHRISTMAS BONUS MINE	Part of Lot 1201 on PH 1309	1000
BIG JOHN	Part of Lot 1201 on PH 1309	1000
WILD HORSE MINE	Part of Lot 1201 on PH 1309	1000
BRYCE BOY	Part of Lot 1201 on PH 1309	1000
DOIHAF2	Part of Lot 1201 on PH 1309	1000
FIREWORKS 3	Part of Lot 1201 on PH 1309	1000
BOBBY DAZZLER	Part of Lot 1201 on PH 1309	1000
BLACK OPAL MINE	Part of Lot 1201 on PH 1309	1000
CANNON BALL RUN	Part of Lot 1201 on PH 1309	1000
RED ROCK	Part of Lot 1201 on PH 1309	1000
PEBBLE	Part of Lot 1201 on PH 1309	1000
RED FLAME	Part of Lot 1201 on PH 1309	1000
TASIC	Part of Lot 1201 on PH 1309	1000
SUNRISE ONE	Part of Lot 1201 on PH 1309	1000
SUNRISE TWO	Part of Lot 1201 on PH 1309	1000
SUNRISE THREE	Part of Lot 1201 on PH 1309	1000
BRIGHT	Part of Lot 1201 on PH 1309	1000
TESS	Part of Lot 1201 on PH 1309	1000
BILL	Part of Lot 1201 on PH 1309	1000
CODY	Part of Lot 1201 on PH 1309	1000
GOTAP ONE	Part of Lot 1201 on PH 1309	1000
TESLER	Part of Lot 1201 on PH 1309	1000
CAMP	Part of Lot 1201 on PH 1309	1000
JAY'S LAST CHANCE	Part of Lot 1203 on CP 844087	1000
KFC	Part of Lot 1 on BB 8	1000
FAIRFIEW	Part of Lot 3397 on PH 71	1000

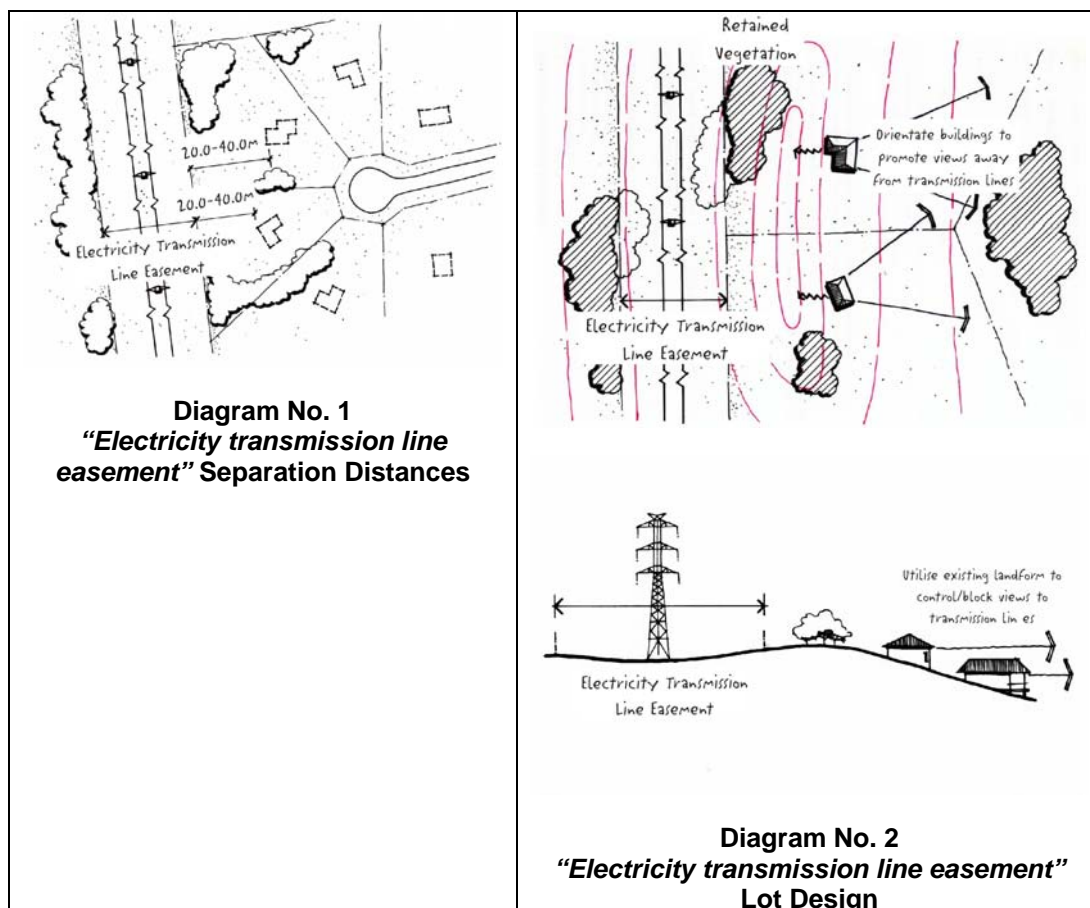
JOHN GUESS	Part of Lot 4374 on PH 1784	1000
JERRY ONE	Part of Lot 3 on FR 14	1000
JENO 3	Part of Lot 3 on FR 14	1000
PIPE'S MINE	Part of Lot 5336 on PH 1777	1000
GOOD ONE	Part of Lot 5336 on PH 1777	1000
LINA GLEN	Part of Lot 15 on WBN 844 084	1000
MERIBAH	Part of Lot 7 on CV 836080	1000

Division 3: Powerline / Electricity Easements

3.1 Separation from Powerline / Electricity Easements

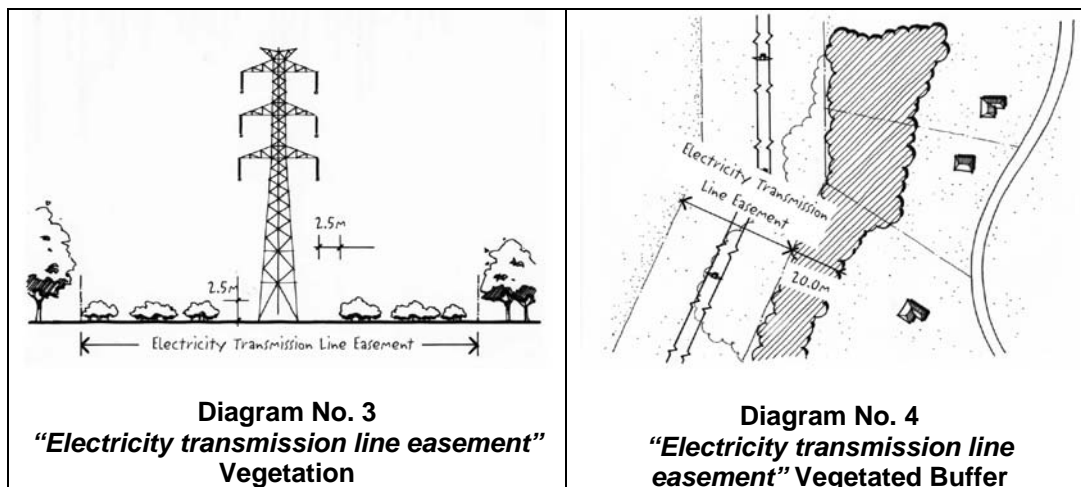
(1) Separation to Powerline / Electricity Easements in accordance with the following distances -

Separation or Buffer Distance	Transmission Line Size
20.0 metres	Up to 132kV
30.0 metres	133kV – 275kV
40.0 metres	Greater than 275kV



3.2 Powerline / Electricity Easements – Vegetation and Vegetated Buffers

(1) Vegetation and Vegetated Buffers in accordance with the following -



Division 4: Separation Distances – Infrastructure Items

4.1 Separation Distances to Infrastructure Items

(1) Separation distances (metres) to infrastructure items are as follows -

Use, Infrastructure Item or Area	Minimum Separation Distance (metres)
Petroleum and Gas Pipeline *	200
Refuse Tip **	500
State-controlled Roads*	100

* Infrastructure Item identified on Land Characteristics Map – Features Map.

** Infrastructure Item identified in Schedule 2, Division 5: Refuse Tips, Section 5.1.

Division 5: Refuse Tips**5.1 Locations of Refuse Tips**

(1) Refuse tip locations are as follows -

Location	Real Property Description
Jundah	Lot 11 on J 2742
Windorah	Lot 26 on GE 36
Stonehenge	Lot 24 on WOL 579

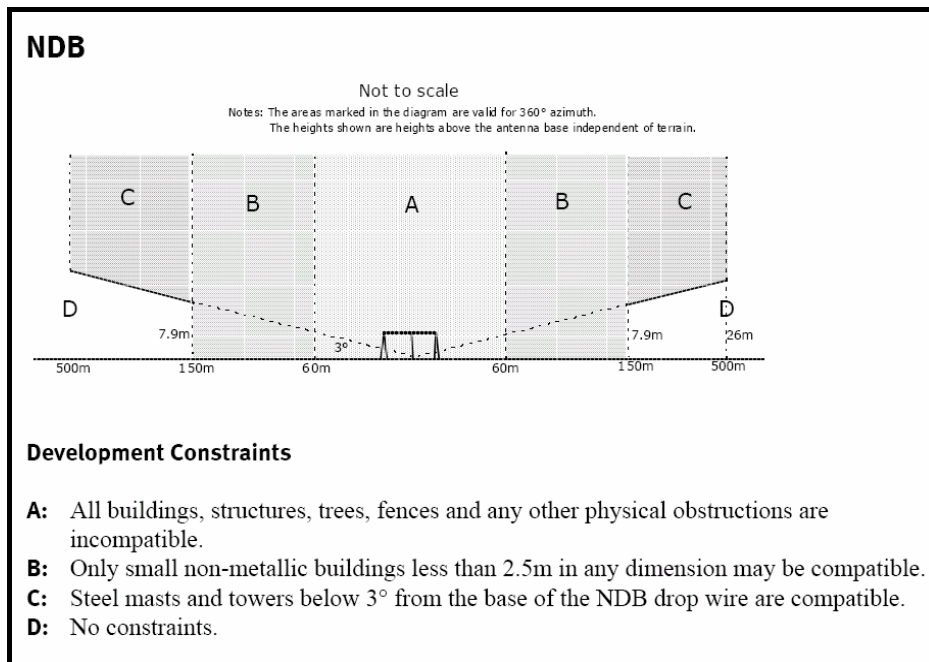
Division 6: Places and Items of Cultural Heritage**6.1 Known Cemeteries and Burial Sites**

(1) Location of known cemeteries and burial sites are as follows -

Location	Real Property Description
Jundah	Lot 22 on WS 71
Windorah	Lot 30 on C 8244
Stonehenge	Lot 41 on WS 3

Division 7: Sensitive Areas For Aviation Facilities

Diagram 1



Division 8: Artesian Springs**8.1 Locations of Artesian Springs**

(1) Artesian Spring locations are as follows -

X Coordinate	Y Coordinate	Real Property Description
144.000	-25.000	Lot 5 on BC64
144.000	-25.000	Lot 5 on BC64
144.000	-25.000	Lot 5 on BC64
144.000	-25.000	Lot 5 on BC64